



THE STATE
of **ALASKA**
GOVERNOR BILL WALKER

Department of Natural Resources

DIVISION OF OIL AND GAS

550 W. 7th Avenue Suite 1100
Anchorage, Alaska 99501-3560
Main: 907.269.8800
Fax: 907.269.8939

May 7, 2018

Laurette Rose
Special Projects Manager
Brooks Range Petroleum Corporation
510 L Street, Suite 601
Anchorage, AK 99501

RE: LONS 11-010, Brooks Range Petroleum Corporation, Southern Miluveach Unit, Mustang Pad, Early Production Facility Unit Plan of Operations Amendment Decision

Dear Ms. Rose:

The Alaska Department of Natural Resources, Division of Oil and Gas (Division), in accordance with Alaska Statute 38.05 and Alaska Oil and Gas Leasing Regulations (11 AAC 83) grants authorization to conduct activities on state lands as proposed in the Southern Miluveach Unit (SMU) Plan of Operations (Plan) amendment application dated March 8, 2018 for the above referenced project.

Scope:

Brooks Range Petroleum Corporation (BRPC) requests approval to install an early production facility (EPF) to bring the Mustang Field into production. The EPF contractor will provide all equipment and personnel required to install and operate the EPF until the permanent facility is installed. The EPF equipment will be removed from site prior to installation of the permanent processing facility.

The EPF will have the capacity for 6,000 barrels of oil per day with a gas to oil ratio of 1,000 and a maximum production of 1,500 barrels of produced water per day. The produced oil from the facility will be trucked to a designated point of sale or processing facility.

Plan activities include:

- Installation and operation of EPF.

Location information:

SMU

Mustang Pad

Meridian: Umiat

Township: 10N

Range: 7E

Section: 2

Lat: 70.248611, Long: -150.2888888888889

ADL(s): 390680

Agency review:

As a courtesy, the amendment application was circulated to the Alaska Department of Fish and Game (ADF&G), and DNR: Division of Mining, Land & Water (DMLW) and Division of Oil and Gas. No comments were received.

Conditions/Stipulations:

1. A certified As-Built survey of the activity shall be provided within one year of placement of the improvement. This As-Built must be both digital and hard copy.

Please attach this amendment approval with the original decision. This unit operations amendment approval is issued in accordance with Alaska Statute 38.05, Alaska Administrative Codes 11 AAC 83.346 and 11 AAC 83.303. The Division reviewed this amendment under the unit regulation for the Plan, 11 AAC 83.346, and considers the factors set forth in 11 AAC 83.303(a) and (b). The amendment was also evaluated against the SMU agreement for conformance.

A person affected by this decision may appeal it, in accordance with 11 AAC 02. Any appeal must be received within 20 calendar days after issuance of the decision, as defined in 11 AAC 02.040(c) and (d) and may be mailed or delivered to the Commissioner, Department of Natural Resources, 550 W 7th Avenue, Suite 1400, Anchorage, Alaska 99501; faxed to 1-907-269-8918, or sent by electronic mail to dnr.appeals@alaska.gov. This decision takes effect immediately. If no appeal is filed by the appeal deadline, this decision becomes a final administrative order and decision of the department on the 31st day after issuance. An eligible person must first appeal this decision in accordance with 11 AAC 02 before appealing this decision to Superior Court. A copy of 11 AAC 02 may be obtained from any regional information office of the Department of Natural Resources.

This approval signifies only that the State of Alaska has no objection to the operations outlined in the Plan amendment application. It does not constitute certification of any property right or land status claimed by the applicant nor does it relieve the applicant of responsibility to obtain approvals or permits from other persons or governmental agencies that may also be required. All stipulations contained in the original lease and subsequent Plan approvals remain in full force and effect.

If activities have not commenced, this approval expires on May 7, 2021. Failure to comply with the terms and conditions outlined in the lease, the attached stipulations, and this authorization may result in revocation of this unit operations approval.

Any questions or concerns about this amendment may be directed to Natural Resource Specialist James Hyun at 907-269-8885 or emailed to james.hyun@alaska.gov.

Sincerely,



Nathaniel Emery
Natural Resource Specialist

Attachments: Figure(s) 1-2
2018 North Slope Mitigation Measures

ecc: DOG: Graham Smith, Nathaniel Emery, and Paul Blanche
DMLW: Melissa Head, Becky Baird, and Kimberley Maher
ADF&G: Jack Winters

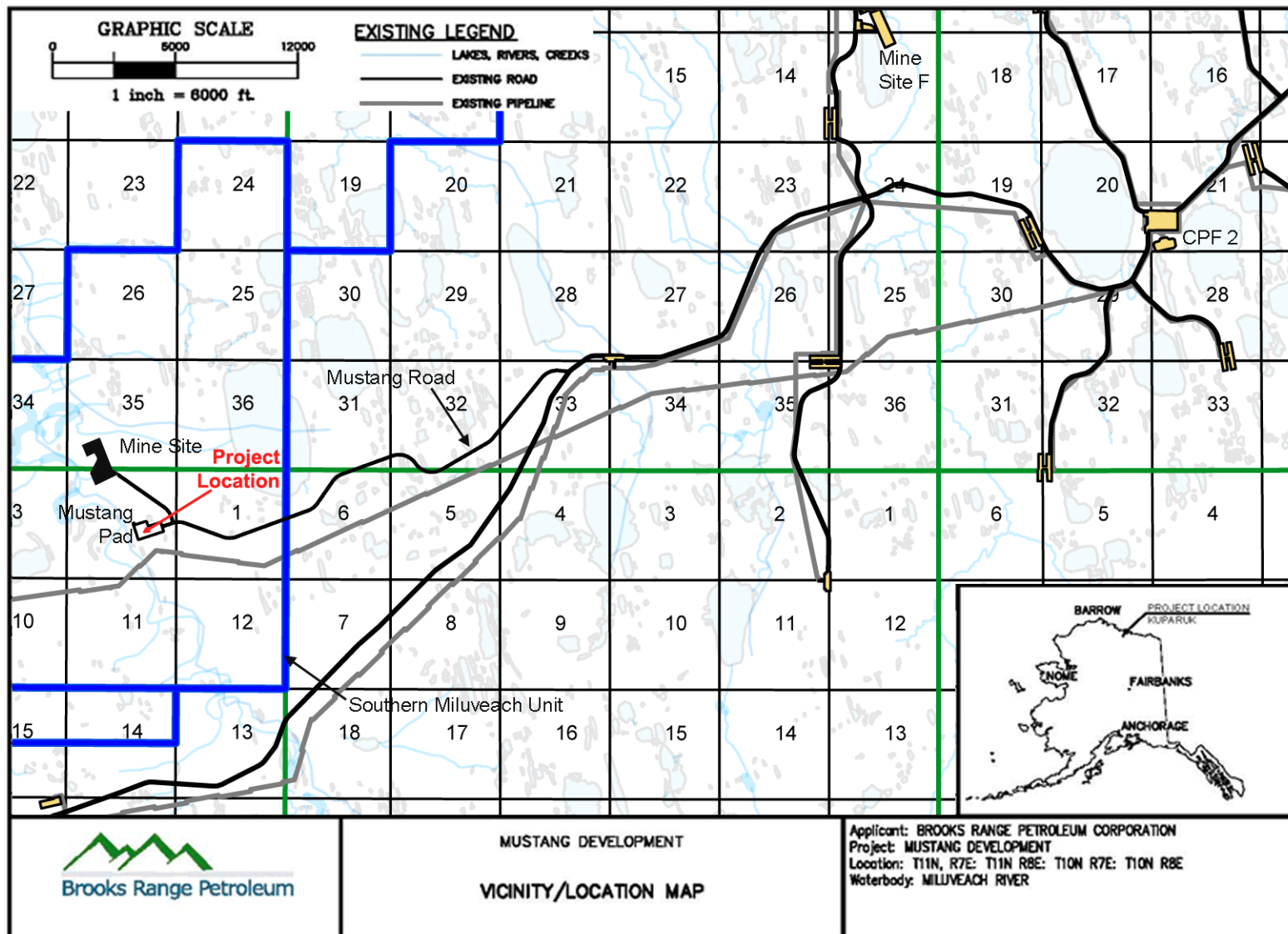
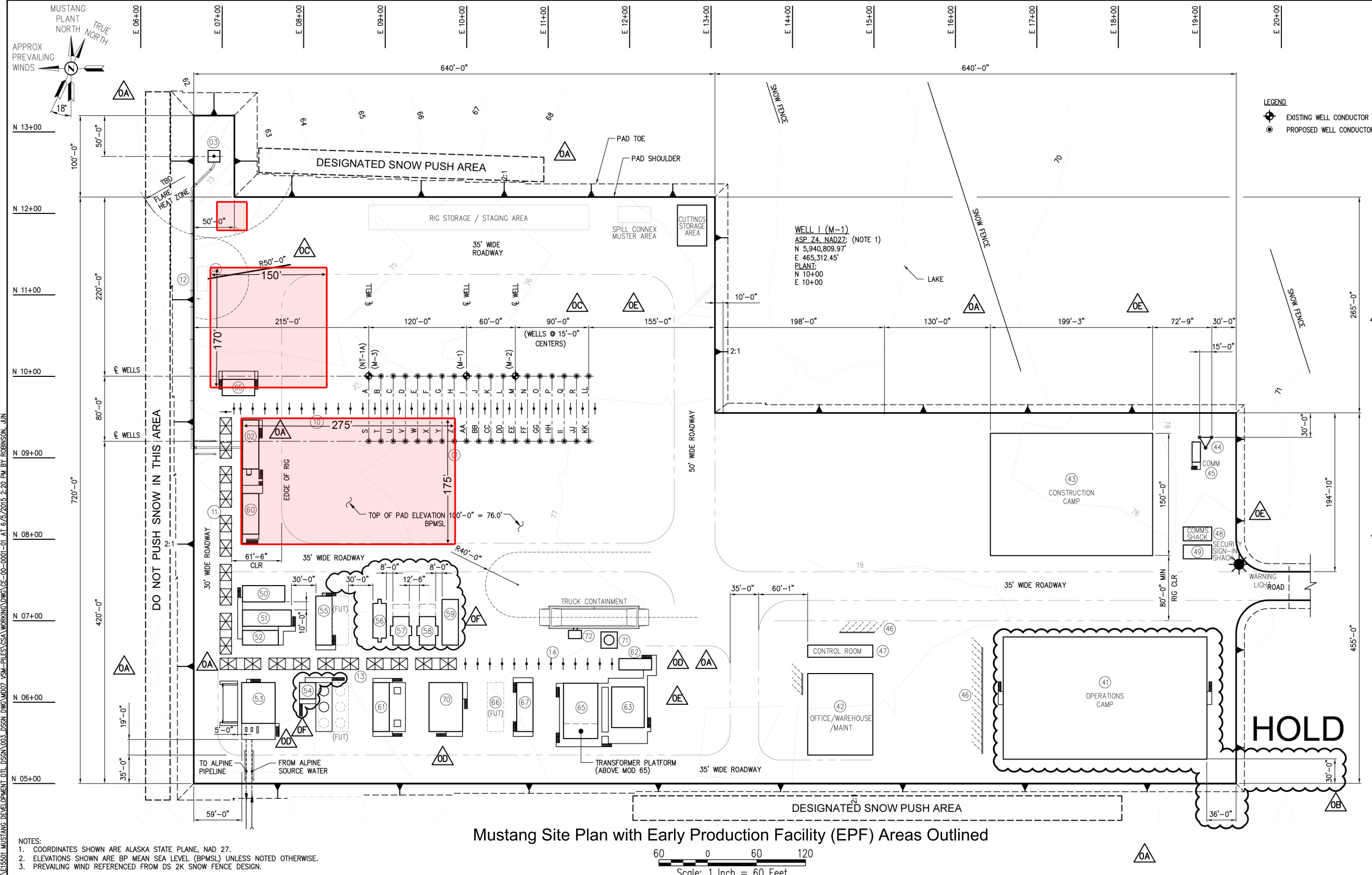


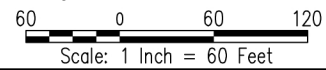
Figure 1



MODULE, PLATFORM & MAJOR EQUIPMENT TABLE		
MOD	DESIGNATION	DIMENSIONS
01	WELL SHELTER (PROD & INJ)	12'-3"W x 12'-3"L
02	KNOCK OUT	20'W x 80'L
03	FLARE STACK	-
04	PROPANE SKID	12'W x 30'L
05	CHEMICAL INJECTION MODULE/PLATFORM	20'W x 40'L 10'W x 40'L
10	DRILL SITE PIPERACK (EAST-WEST)	14'W x 450'L
11	PROCESS AREA PIPERACK (NORTH-SOUTH)	14'W x 290'L
12	FLARE PIPERACK	8'W x 330'L
13	PROCESS AREA PIPERACKS (EAST-WEST)	14'W x 290'L
14	UTILITY AREA PIPERACK	14'W x 180'L
41	OPERATIONS CAMP	150'W x 250'L
42	OFFICE/WAREHOUSE/MAINT	80'W x 100'L
43	CONSTRUCTION CAMP (250 B)	199'W x 150'L
44	COMMUNICATIONS TOWER	15'W x 13'L
45	COMMUNICATIONS MODULE	10'W x 25'L
46	BULLRAILS	-
47	CONTROL ROOM MODULE	15'W x 80'L
48	COMMUNICATIONS SHACK	-
49	SECURITY SIGN-IN SHACK	-
50	INLET PRODUCTION HEATER MODULE	20'W x 52'L
51	INLET SEPARATION MODULE (28'H)	20'W x 60'L
52	TREATER MODULE (28'H)	18'W x 44'L
53	CRUDE SHIPPING MODULE	41'W x 70'L
54	CRUDE TANKS MODULE	20'W x 20'L
55	CRUDE TANKS PLATFORM	20'W x 60'L
56	WATER HANDLING MODULE	20'W x 60'L
57	VAPOR RECOVERY COMPRESSORS MOD	16.5'W x 42.5'L
58	GAS COMPRESSORS MODULE	20'W x 35'L
59	FUEL GAS CONDITIONING MODULE	20'W x 35'L
60	DS ELECTRICAL MODULE	20'W x 50'L
61	PROCESS AREA ELECTRICAL MODULE	20'W x 60'L
62	FUEL GAS MODULE	14'W x 40'L
63	TURBINE GENERATOR MODULE	40'W x 50'L
64	NOT ASSIGNED	-
65	GENERATOR SWITCHGEAR MODULE	40'W x 68'L
66	UTILITY AREA TRANSFORMER PLATFORM	18'W x 40'L
67	DIESEL GENERATOR MODULE (RENTAL)	20'W x 60'L
70	UTILITY MODULE	41'W x 60'L
71	DIESEL TANK PLATFORM	20'W x 20'L
72	DIESEL TANKS FILL SHELTER	10'W x 16'L

NOTES:
1. COORDINATES SHOWN ARE ALASKA STATE PLANE, NAD 27.
2. ELEVATIONS SHOWN ARE BP MEAN SEA LEVEL (BPMSL) UNLESS NOTED OTHERWISE.
3. PREVAILING WIND REFERENCED FROM DS 2K SNOW FENCE DESIGN.

Mustang Site Plan with Early Production Facility (EPF) Areas Outlined



Indicates EPF Locations

		OF	06/15	RE-ISSUED FOR CONSTRUCTION PER E15501.07
		OE	05/15	RE-ISSUED FOR CONSTRUCTION PER E15501.07
		OD	04/15	RE-ISSUED FOR CONSTRUCTION PER E15501.07
		OC	03/15	RE-ISSUED FOR CONSTRUCTION PER E15501.07
		OB	02/15	ISSUED FOR CONSTRUCTION PER E15501.07
		OA	02/15	RE-ISSUED FOR DESIGN PER E15501
		O	11/14	ISSUED FOR DESIGN
DWG.No.	TITLE	No.	DATE	DESCRIPTION
	REFERENCE DRAWINGS			ISSUES / REVISIONS

JMR

DGH

JSW

R²G

WEW

DJG

JMR

DGH

JSW

R²G

WEW

DJG

JMR

CFG

JSW

R²G

WEW

DJG

JMR

DGH

JSW

R²G

WEW

DJG

JMR

AKF

JSW

R²G

WEW

DJG

JMR

AKF

R²G

TR

PHF

MCW

ASRC ENERGY SERVICES

Alaska, Inc.

TITLE

MUSTANG DEVELOPMENT

SITE PLAN

DRAWN BY:

J ROBINSON

CHECKED BY:

K FIELDS

DISCIPLINE ENG.

R GONZALES

PROJ. ENG.

T REYNOLDS

PROJ. MGR.

P FAIRCHILD

REV.

OF

DATE

10/30/14

SCALE

1" = 60'

DWG. NO.

CE-00-0001-01

DSGN/CNST



Figure 2